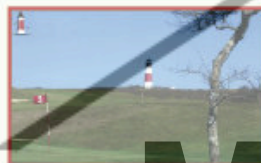




"Lighthouse"

1921

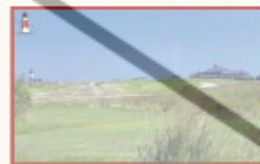
Sankaty Head was designed by Emerson Armstrong and opened in 1923. It is perched on the edge of Nantucket Island and is considered as one of the few true world class links style courses. The famous "Sankaty Head" lighthouse looms over the front 9 and lights the Atlantic Ocean. Sankaty plays to the winds delight and with its kinks and bends offers a superb blend for a golf adventure.



The 3rd



The 14th



The 9th

Sankaty Head Golf Club  
Siasconset, Massachusetts

Out 3343 yards par 36  
In 3369 yards par 36  
Total 6711 yards par 72

Card of the Course

No 1"Outward Bound"	416 yards par 4	No 10"Carry On"	433 yards par 4
No 2"Pocomo"	389 yards par 4	No 11"High Knoll"	481 yards par 5
No 3"Quident"	198 yards par 3	No 12"Westward Ho"	208 yards par 3
No 4"Sesachacha"	498 yards par 5	No 13"Coffins Corner"	382 yards par 4
No 5"Light A'port"	423 yards par 4	No 14"Wee One"	149 yards par 3
No 6"Pine Valley"	181 yards par 3	No 15"Light Ahoy"	398 yards par 4
No 7"Cross Rip"	414 yards par 4	No 16"Round the Horn"	388 yards par 4
No 8"Come About"	536 yards par 5	No 17"Long Journey"	546 yards par 5
No 9"Gray Lady"	289 yards par 4	No 18"Thar She Blows"	387 yards par 4